

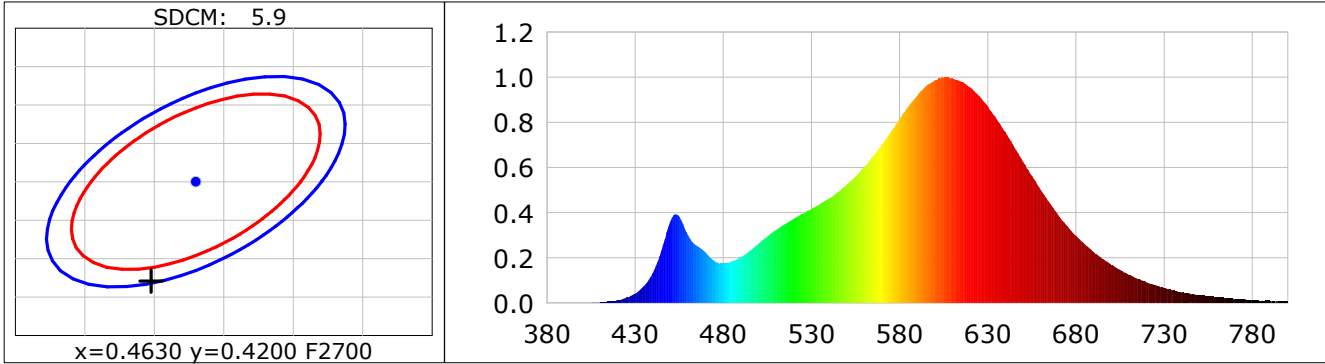
## Lightsource Test Report

**Product Infomation**

Product Category: LED STRIP	Product Type: LED STRIP
Product Spec: BELL 4	Product Number: 394
Manufacturer: TECSOLEED S.L.	Buyer: TECSOLEED S.L.

**CIE Colorimetric Parameters**

Chromaticity coordinates:  $x=0.4598$   $y=0.4070$   $u(u')=0.2640$   $v=0.3506$   $v'=0.5260$   
 CCT:  $T_c=2674K$  ( $duv=-0.00131$ )      Color Ratio:  $R=0.254$   $G=0.722$   $B=0.024$   
 Peak Wavelength: 604.2nm      Half Bandwidth: 113.6nm  
 Dominant Wavelength: 584.8nm      Color Purity: 0.602  
 CRI:  $R_a=82.3$ ,  $avgR(1\sim14)=77.8$ ,  $avgR(1\sim15)=77.5$       TM30:  $R_f=85$ ,  $R_g=95$   
 GAI:  $GAI\_BB\_8=97.4$ ,  $GAI\_BB\_15=105.2$ ,  $GAI\_EES=46.5$   
 R1 =81    R2 =93    R3 =94    R4 =80    R5 =82    R6 =93    R7 =79    R8 =57  
 R9 =8    R10=84    R11=79    R12=78    R13=84    R14=98    R15=73  
 Color Quality Scale:  $Q_a=82.1$ ,  $Q_f=84.3$ ,  $Q_p=84.7$ ,  $Q_g=90.9$   
 Q1 =77    Q2 =93    Q3 =85    Q4 =80    Q5 =83    Q6 =84    Q7 =83    Q8 =84  
 Q9 =93    Q10=90    Q11=86    Q12=83    Q13=82    Q14=72    Q15=74



**Photometric Parameters**

Luminous Flux: 2029.3 lm	Efficiency: 97.71 lm/W	Radiant Power: 6.324 W
Total mains efficacy: 90.48 lm/W	Energy Efficiency Class: F (EU 2019/2015)	

**Electric Parameters**

Voltage: 24.000V	Current: 0.8654A	Power: 20.77W
Power Factor: 1.0000	Frequency: 0.00Hz	

**Test Infomation**

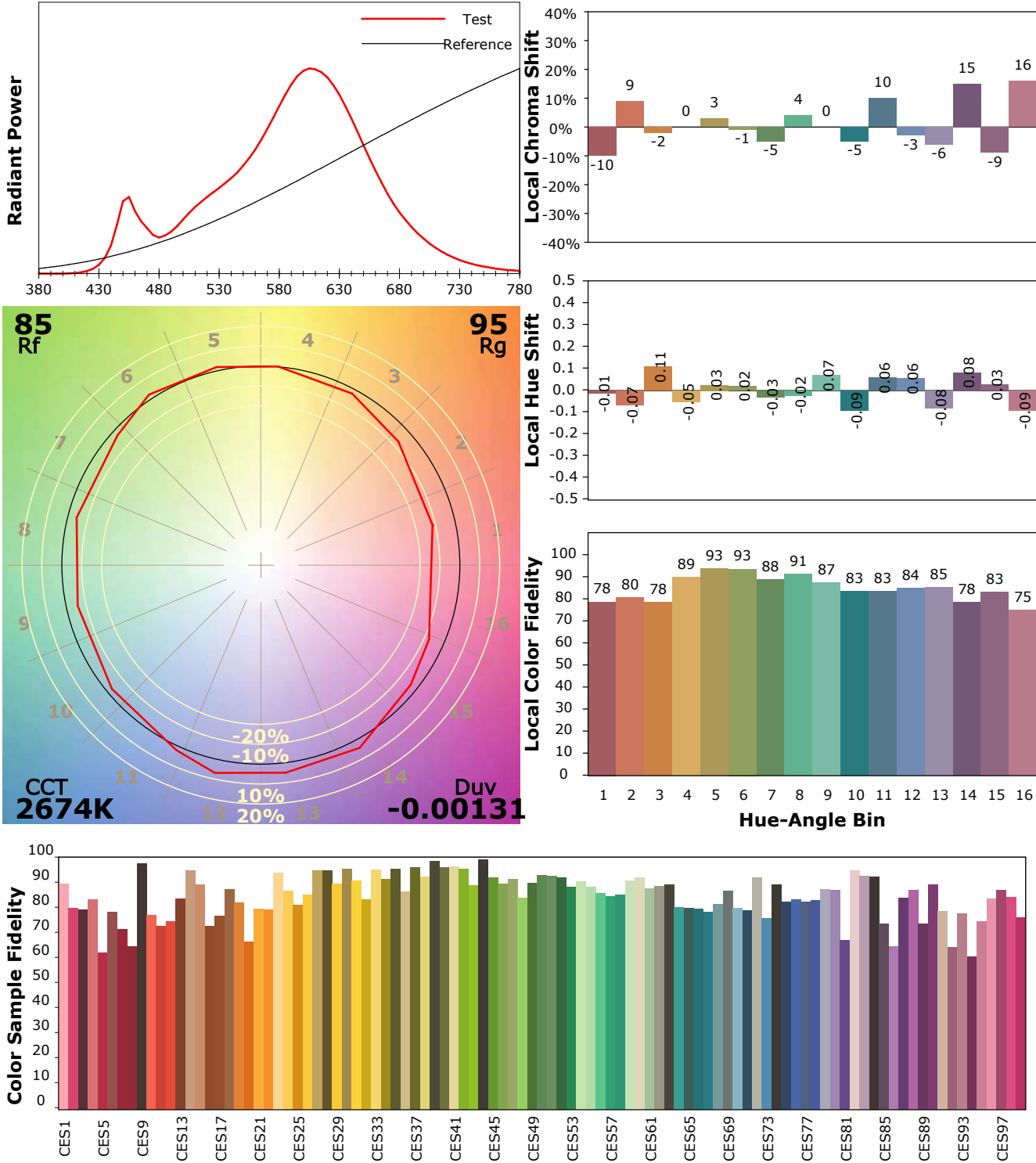
Scan Range: 380~800:1nm	Photometric Method: sphere-spectroradiometer
Stabilization Time: 0 Sec    ALC.: 1.0000	Photometric Condition: Sphere diameter: 1.50m, 4PI
Max of Signal: 47679 (2035)	CCD Integration Time: 341.51 ms

## IES TM-30-18 Color Rendition Report

**Product Information**

Product Category: LED STRIP  
 Product Spec: BELL 4  
 Manufacturer: TECSOLED S.L.

Product Type: LED STRIP  
 Product Number: 394  
 Buyer: TECSOLED S.L.



Condition: Tx:17.4'C, Ti:16.6'C, R.H.:60%  
 Test Lab: TECSOLED S.L.  
 Operator: JORDAN GIL DIAZ

Test Device: Inventfine CMS-2S (Plus)  
 Test Time: 2021-11-08 15:34:08  
 Inspector: